



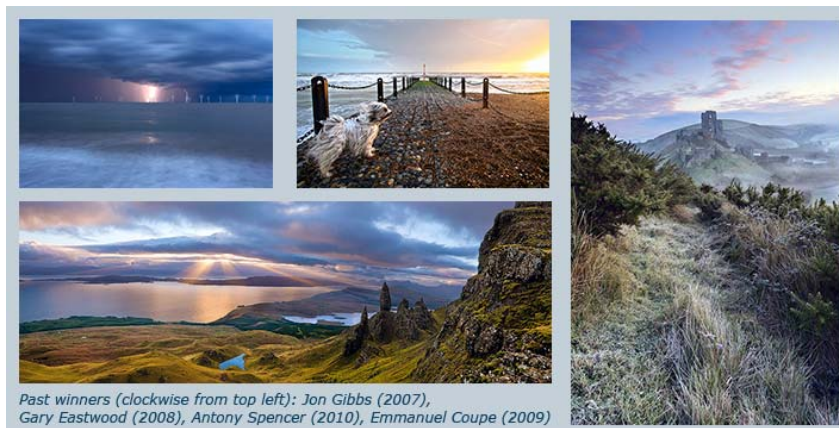
LANDSCAPE PHOTOGRAPHER OF THE YEAR AWARDS 2011

in association with



Who will be the 2011 Landscape Photographer of the Year?

30th September 2011



The fifth year of this annual Award, to find the UK's Landscape Photographer of the Year, again received thousands of entries highlighting the very best of our varied country. The winning images will premiere this autumn in a stunning free exhibition at London's National Theatre from December 5th. The judges have made their decisions and this year's winners will be announced in October to coincide with the launch of the new Awards book.

The Take a view – Landscape Photographer of the Year Awards help to reflect the heart and spirit of Britain and attract entries of the very highest standard. This year's winning images evoked a series of emotions in the judges. Many are overtly beautiful but others have a more austere, challenging beauty, highlighting the impact that man has on the

landscape and helping to show the importance of ensuring a safe future for this precious inheritance.

For the second year, the Awards are held in association with Network Rail and feature the Special 'Lines in the Landscape' Award for the best picture of the relationship between today's rail network and its surroundings. A stunning shortlist will appear in the new book alongside the main winner. The final results have again proved that there is beauty and interest to be had wherever you travel.

The fifth book in the popular series, 'Landscape Photographer of the Year – Collection 5' by AA Publishing, features all of the winning & commended entries from 2011 and will be published on October 31st.

Charlie Waite, one of Britain's best-loved landscape photographers & founder of Take a view, says: "The standard of the entries we receive each year continues to exceed all expectations. The passion of the photographers who enter shines through and each manages to capture a significant moment in the history of this beautiful and varied country. I cannot wait to see the exhibition. The National Theatre is an amazing venue and the support we have received from Epson, for the fourth year, will help to ensure that the winning images are seen at their very best. I am very pleased that my aim, to involve as many people as possible in making and enjoying images that symbolise our land and our times, continues to be met with such enthusiasm."

Charlie will be giving talks at the National Theatre bookshop and also guiding tours of the exhibition on selected dates throughout the exhibition run. Further details can be found on the website, www.take-a-view.co.uk

Exhibition details:

Take a view – Landscape Photographer of the Year 2011 Exhibition

In association with Network Rail & Epson UK

With over 100 beautiful landscape images printed using the latest Epson inkjet technology

Dates: Monday, 5th December 2011 - 28th January 2012

Times: Generally open 9.30am – 10.30pm, Monday – Saturday (from 4pm on Bank Holidays) and Sunday 12pm - 6pm. Please check National Theatre website for final details. NB. Closed on 8th January for NT event.

Venue: Lyttelton Foyer, National Theatre, South Bank, London SE1 9PX
020 7452 3400

PRIVATE VIEW (by invitation) : Tuesday, 6th December 2011

Seeing Landscapes – Charlie Waite talks

To tie in with the exhibition, renowned landscape photographer and Awards founder, Charlie Waite, will give talks, in the National Theatre Bookshop, at 7.45pm on the 13th & 14th December 2011 and the 23rd & 24th January 2012. Timed tours will be in the afternoons of the same days. Tickets: £5.00 for talks & £8.00 for tours from the box office.



www.charliewaite.com

- ENDS -

www.take-a-view.co.uk

For more information, please contact: info@take-a-view.co.uk



Network Rail is the 'not for dividend' owner and operator of Britain's railway infrastructure, which includes the tracks, signals, tunnels, bridges, viaducts, level crossings and stations - the largest of which we also manage. We aim to provide a safe, reliable and efficient rail infrastructure for freight and passenger trains to use.

www.networkrail.co.uk



The Epson Stylus Pro 9900, together with Epson Traditional Photo Paper, will be used to print the display panels for the National Theatre exhibition. The UltraChrome HDR inkset of the printer ensures the most accurate colour reproduction possible and the paper's smooth and glossy finish is reminiscent of the prints created using traditional techniques. Widely considered to be a perfect combination for professional large format printing, there is no doubt that the images will be shown in their full glory.

www.epson.co.uk